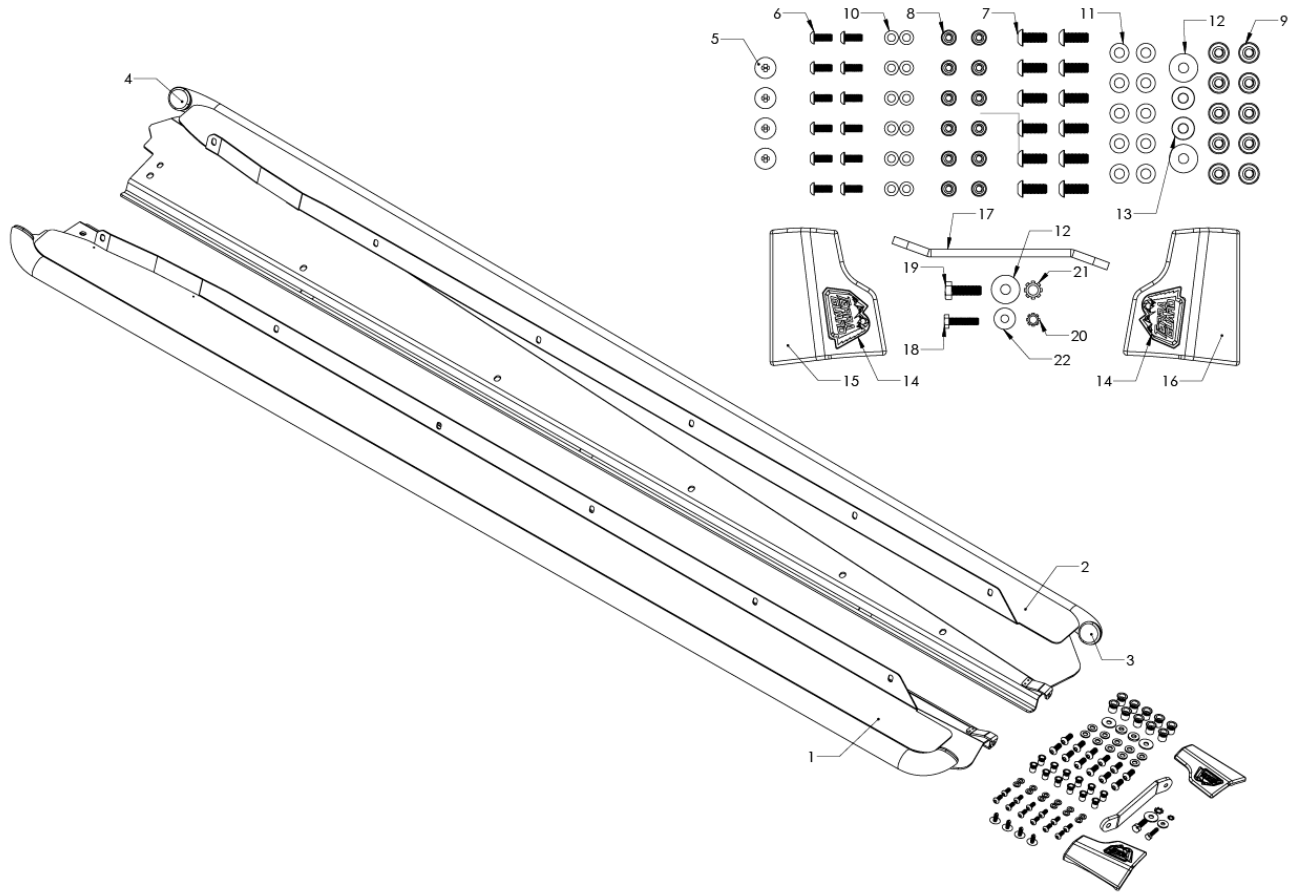




## 79-27002 aFe Power Terra Guard Off-Road Slider Subaru Outback 15-19 BS Platform



Item	Description	P/N	Qty
1	RT Slider Assembly: BS Outback	05-61487	1
2	LF Slider Assembly, BS Outback	05-61488	1
3	Cap, Tube End: 20-23 Outback	05-01749	2
4	Cap, Tube End: 15-19 Outback	05-01755	2
5	Retainer Clip, Christmas Tree Style: 9/32" Hole	03-50616	4
6	Screw, Btn Hd Socket: M6x1x15, SS Black	03-50795	12
7	Screw, Btn Hd Socket: M8x1.25x20, SS Black	03-50796	12
8	Rivet, Nut: M6	03-50799	12
9	Rivet, Nut: M8	03-50798	12
10	Washer, M6 (12mm OD x 6.4mm ID)	03-50177	12
11	Washer, Flat M8: 16mm OD S/S	03-50159	10
12	Washer, Flat: 24mm ODxM8 ID	03-50065	3
13	Aluminum spacer 3/4 x 5/16 x 1/8	03-50800	2
14	Emblem, Terra Guard: 304SS (0.5mm 3M)	06-00238	2
15	Cover, RT, 15-19 Outback	05-01751	1
16	Cover, LF, 15-19 Outback	05-01752	1
17	Tool, Rivnut M6/M8	03-50801	1
18	Screw, Hex Head: M6x1x25mm	03-50114	1
19	Screw, Hex Head: M8x1.25x25mm	03-50421	1
20	Washer, Ext Star Lock M6	03-50803	1
21	Washer, Ext Star Lock M8	03-50804	1
22	Washer, Flat: M6	03-50070	1



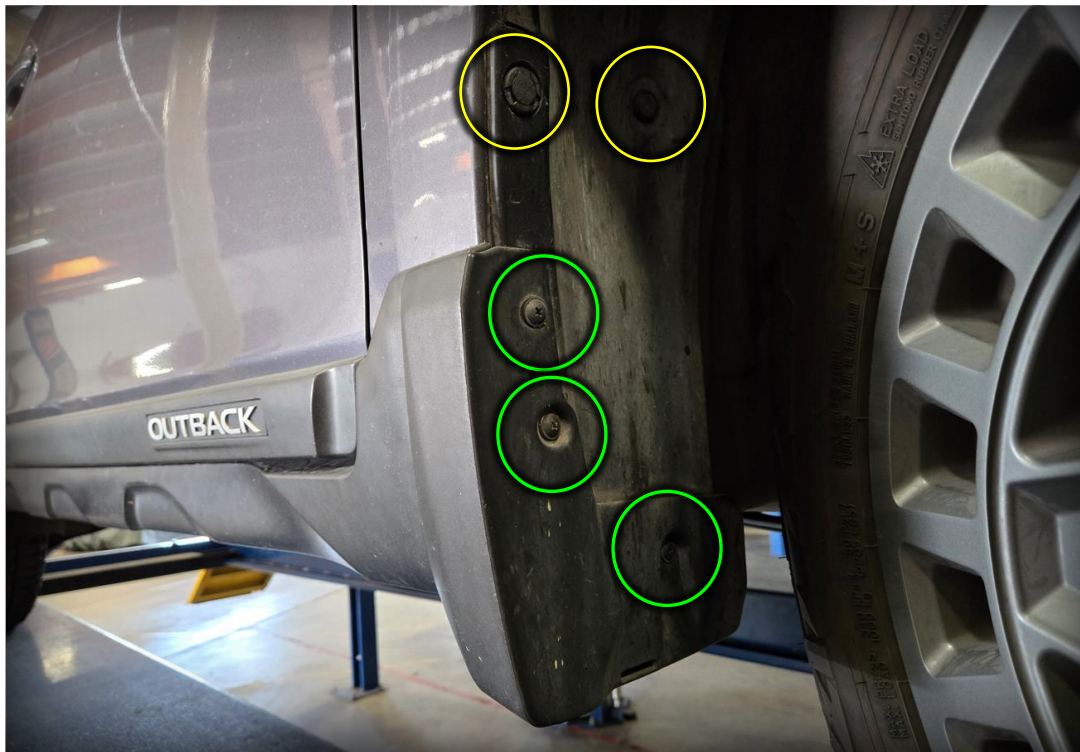
- Please read the entire instruction manual before proceeding.
- Ensure all components listed are present.
- For technical support please call 951-493-7185.
- Ensure you have all necessary tools before proceeding.
- Retain factory parts for future use.

**Procedure:**

1. This installation can be done with the vehicle on the ground. But, for an easier installation, drive the vehicle onto floor ramps or 4-post rack. Steer the front wheels towards the side you are working on. This will allow more space to work on the inner fender area.



2. Locate the front splash guard area and remove the (2) pop clips and (3) screws just behind the front wheel.

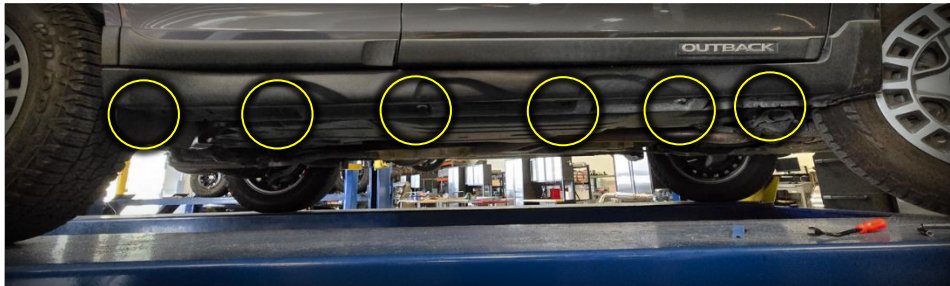




There is also a pop clip at the bottom of the splash guard that needs to be removed.



3. Remove the (6) pop clips at the bottom of the rocker panel.



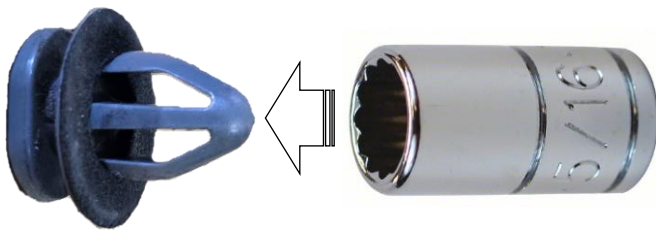
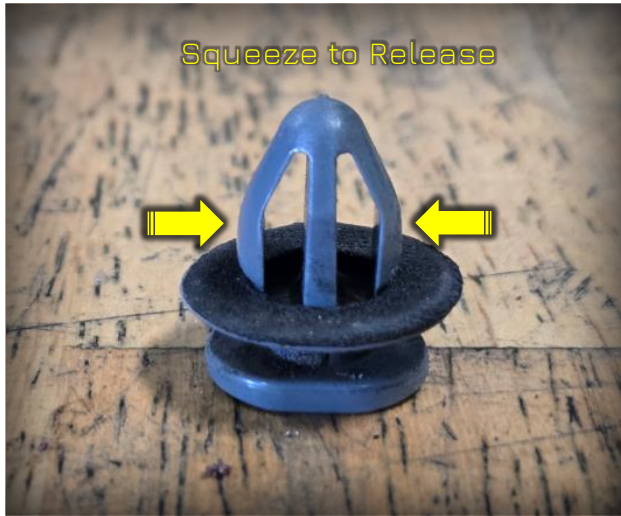


4. Pull cladding to separate the top portion of the panel away from the body.



5. Toward the front of the rocker cladding, at the bottom of the front fender, there (2) tricky push clips that need to be squeezed to release. Peel open the wheel well plastic to access the backside of these clips. You will need to pinch the two tangs on the clip to release. If you try to just pull on the plastic rocker cladding, you will end up separating the cladding from the clips, still leaving you with the chore of removing the clips from the fender.





TIP:  
If you have a 5/16", 12-point socket,  
you can sleeve it over the clip from  
the inside of the fender and release  
the clip.





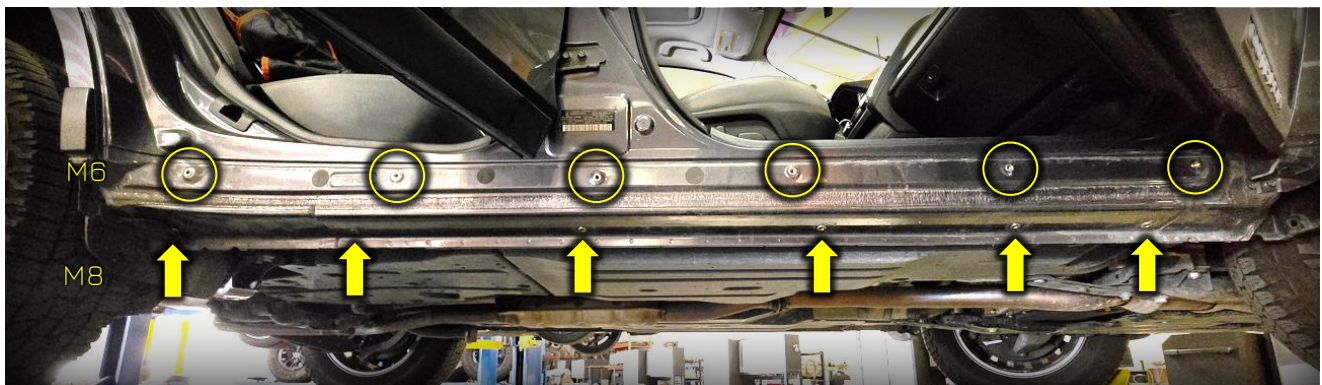
6. There is a rubber flap near the rear of the rocker. Remove the pop clip to allow the rubber flap to pull away from the bottom.



7. **(Optional)** At this point you can choose to paint the lower portion of the rocker black to make the installation look seamless. Mask above the reference line indicated below. Scuff the paint with a Scotchbrite pad and clean with isopropyl alcohol. Truck bed liner works well for this application.

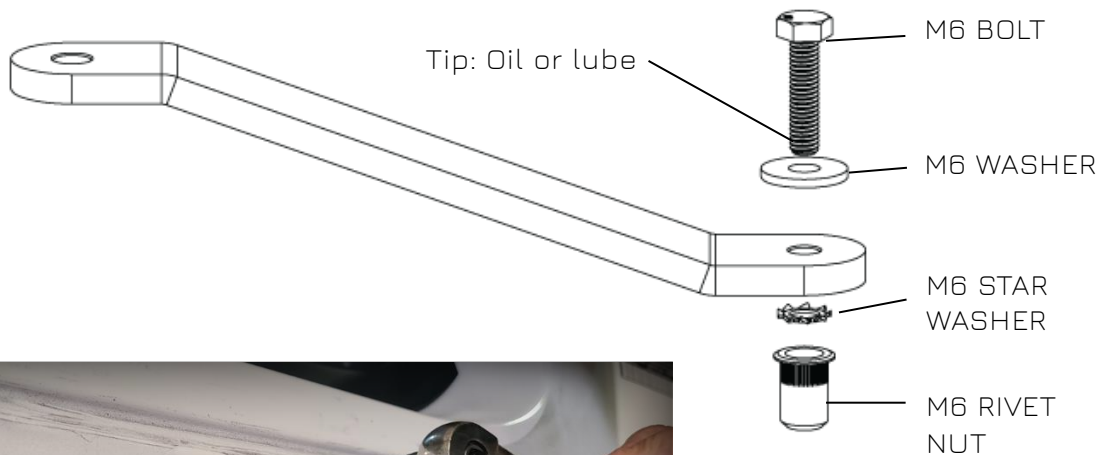


8. Next, install the rivet nuts. The (6) M6 rivet nuts will go on the top vertical portion of the rocker and the (6) M8 rivet nuts will install on the bottom section of the panel.



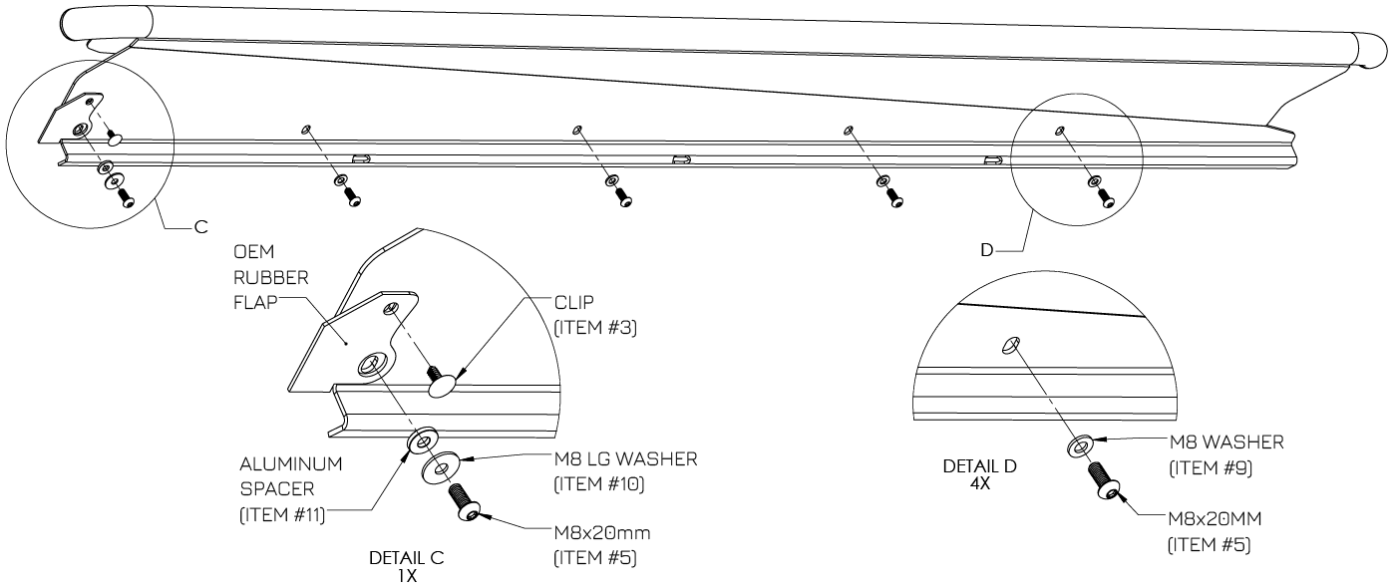


Your kit includes a rivet nut tool that allows for easy installation. Simply insert the rivet nut into the hole flush to the panel. Next install the appropriately sized bolt and washer on the top end of the tool and install the star lock washer at the bottom of the tool. **(Tip: oil or lube beginning threads)** Thread the bolt into the rivet nut, sandwiching the star washer. Once everything is finger tight, use a 10mm or 13mm socket to tighten the bolt while holding the tool stationary. The bolt should spin while the rivet nut forms in place. Once you feel a noticeable increase in resistance the rivet should be formed completely tight onto the sheet metal. Unscrew the bolt and move on to the next.



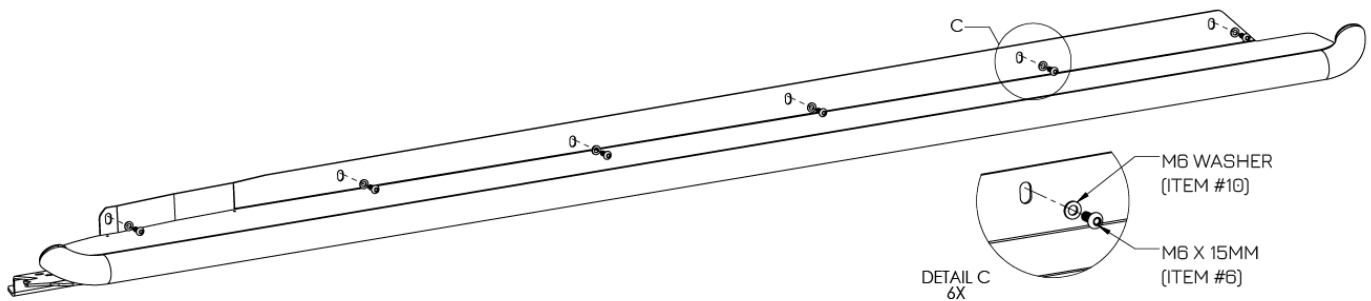


9. Install the Slider onto the car. Start attaching the bottom with the M8 button heads (item #5) with the M8 washers (item #9) loosely. These panels can be heavy, so it helps to have another person hold one end when installing.



The OEM rear rubber flap will reside over the step panel so when you get to the last rearward bolt you will place the aluminum spacer (item #11) in the flap hole and larger M8 washer (item #10) to secure the rubber flap in place. Install the provided push retainer clip (item #3) into the smaller hole to further secure the rubber flap.

10. Next, start attaching the top panel with the M6 button heads (item #6) and M6 washers (item #10). Remember to keep all bolts loose to make it easier to start all of the fasteners.





11. Once all of the bolts are started, we will tighten all of the fasteners. First, tighten the bottom panel **M8 bolts (240 in · lbs)** and then work your way up to the top **M6 bolts (80 in · lbs)**. Tightening out of sequence may twist the step from its intended shape.
12. Install the front pop clip (ITEM# 5). Reinstall the (2) screws and (2) pop clips into the wheel well. (Note: aFe pop clip replaces the bottom screw)



13. Grab one of the front covers (ITEMS# 15, 16). Clean the area where the exposed holes are located. Peel the double sided backing and adhere the cover to the fender. Use the two dowel pins to locate the position of the cover.





14. Repeat on the other side and you are finished with the Terra Guard step install.



232 Granite St. Corona CA 92879 | aFePower.com | 951-493-7100



*advanced FLOW engineering, inc.*