

advanced FLOW engineering Silver Bullet Throttle Body Spacer

Instruction Manual P/N: 46-34017B (Fits with Factory Air Intake)

Make: CHEVROLET

Model: CORVETTE (C8)

Year: 2020-2021

Engine: V8-6.2L



- Please read the entire instruction manual before proceeding.
- Ensure all components listed are present.
- If you are missing any of the components, call customer support at 951-493-7185.
- Ensure you have all necessary tools before proceeding.
- Do not attempt to work on your vehicle when the engine is hot.
- Retain factory parts for future use.

Label	Qty.	Description	Part Number
A	1	Silver Bullet Throttle Body Spacer (Black)	R46-34017B
B	1	O-ring	03-50663
C	4	Screw, Socket Head Cap: M6 x 1.0 x 30	03-50382
D	1	Clamp, 064 (2-1/2" - 4-1/2 ")	03-50006
E	1	Coupling, Silicone	05-01571
F	1	Clamp, Spring Band	03-50646
G	1	Fitting, 5/8" QD, 90 Deg	05-01576
H	1	Clamp, 072 (3" – 5")	03-50010

Installation will require the following tools:

7mm, 8mm, 10mm Nut Drivers or Ratchet and Sockets, T15 Driver, Flat Head Screwdriver, 5mm Hex Key, Pliers

Emissions Disclaimer: This product is not currently CARB exempt and is not available for purchase in California or for use on any vehicle registered with the California Department of Motor Vehicles.

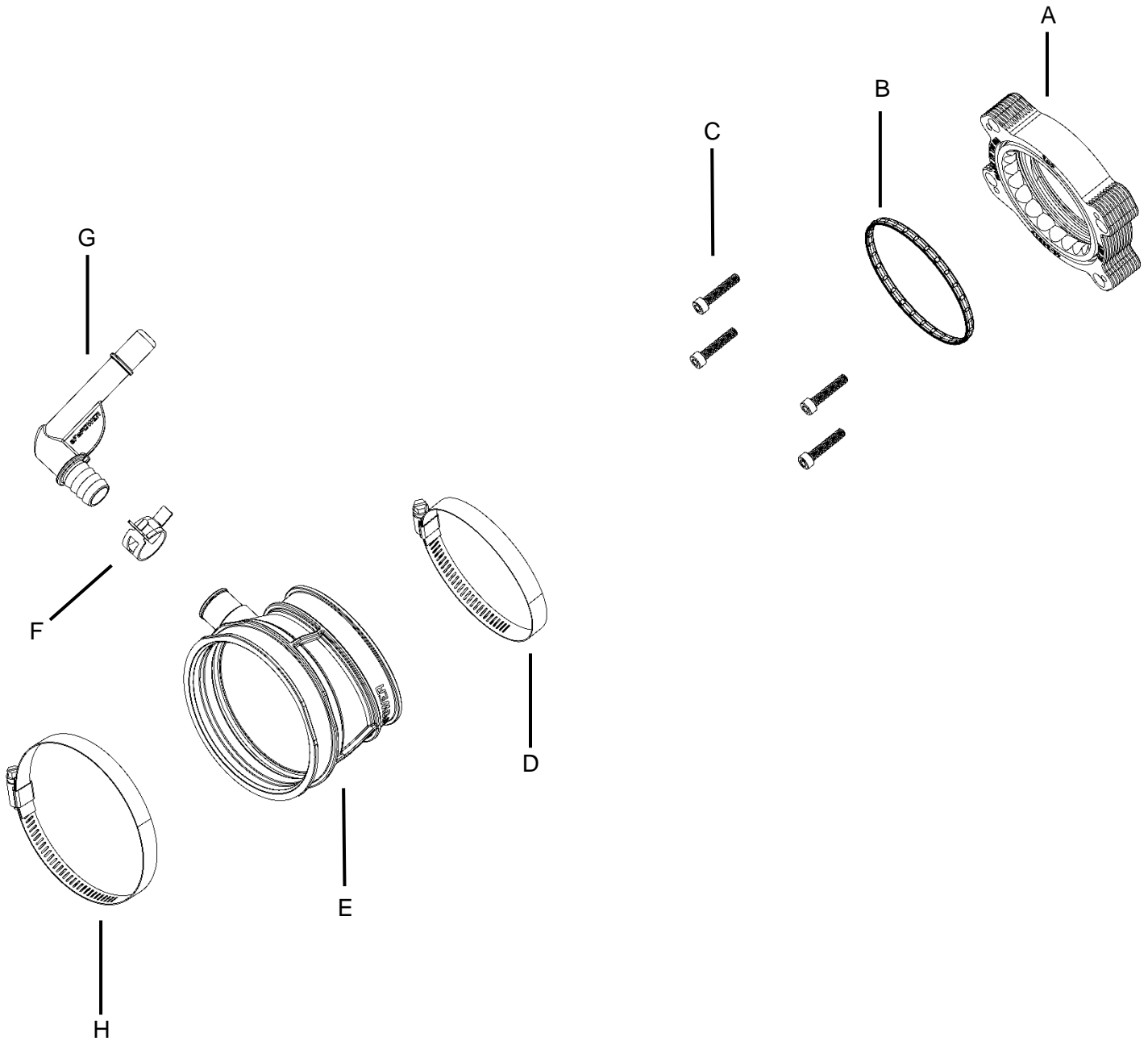




Figure A

Refer to Figure A for Step 1

Step 1: Open the trunk and remove the seal trim surrounding the trunk.

**Figure B****Refer to Figure B for Step 2**

Step 2: Remove the (8) T15 screws securing the roof latches on driver side and passenger side.

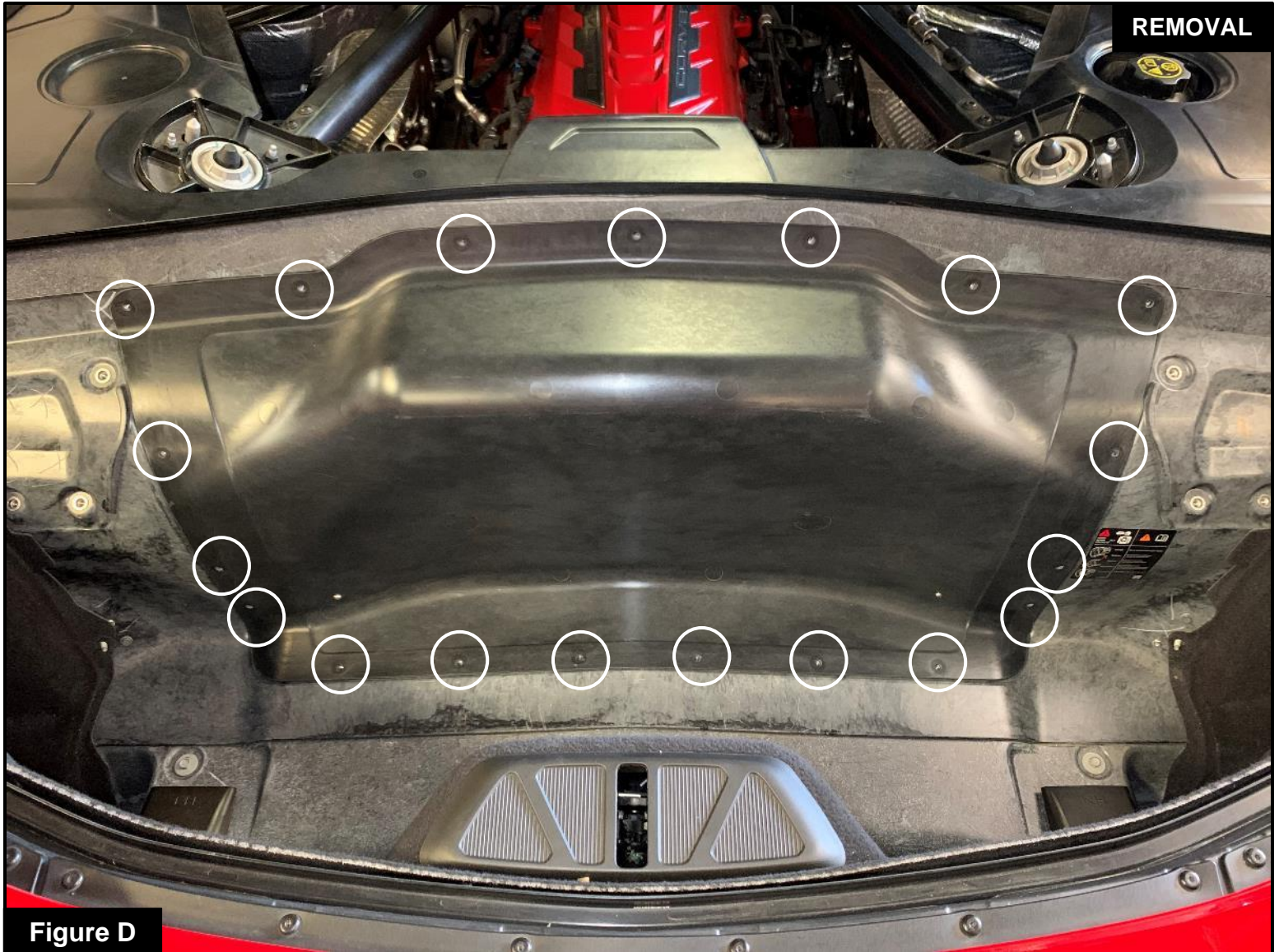


Refer to Figure C for Steps 3-5

Step 3: . Unscrew and remove the (2) cargo net hooks (one on the driver side and one on the passenger side)

Step 4: Remove the (4) push clips securing the carpet (2 on the driver side and 2 on the passenger side).

Step 5: Remove the carpet to gain access to the engine



Refer to Figure D for Steps 7-8

Step 7: Remove the T15 screws securing the plastic engine cover.

Step 8: Then remove the plastic engine cover to gain access to the factory air box.

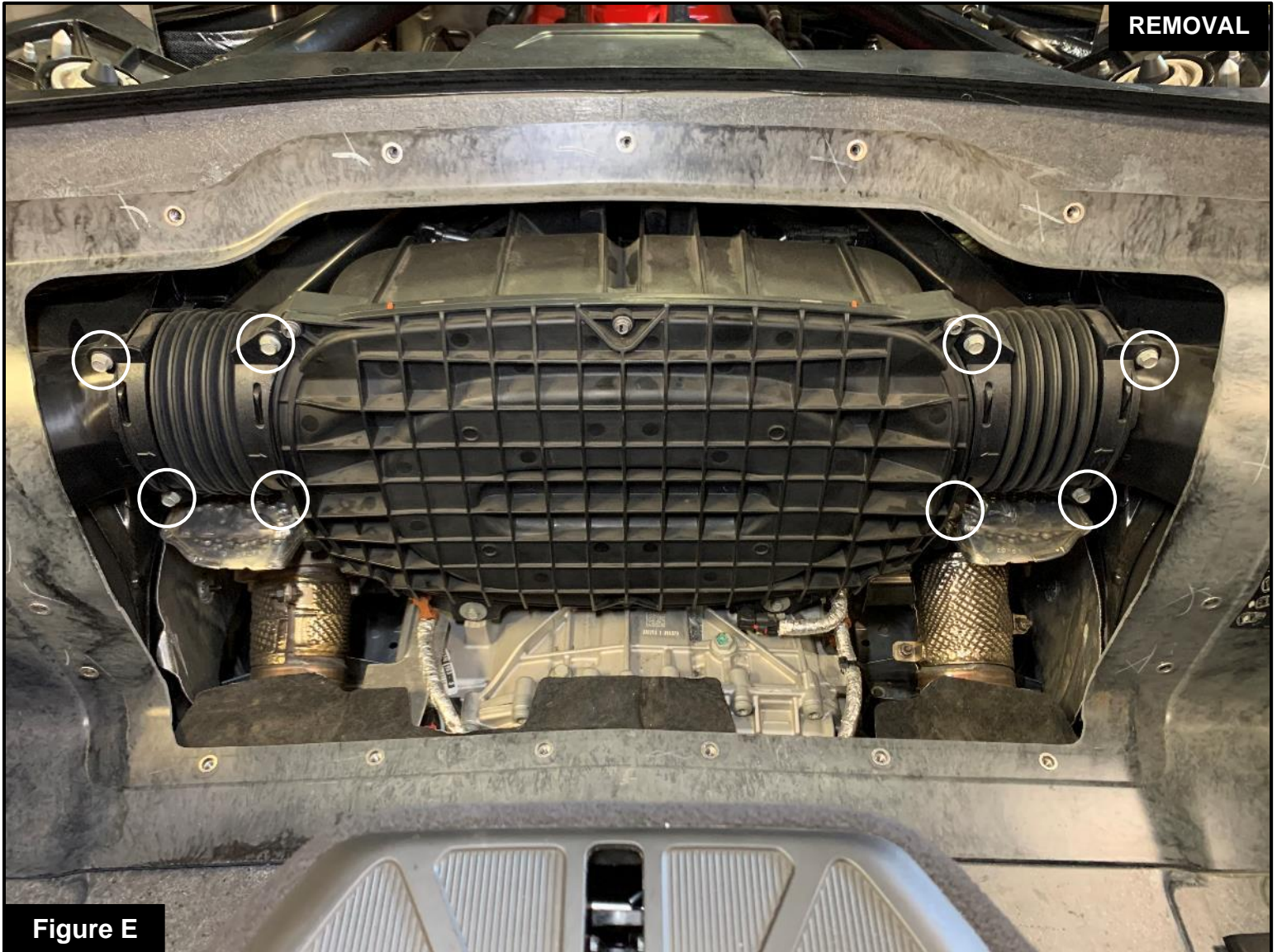


Figure E

Refer to Figure E for Step 9

Step 9: Remove the (8) 10mm screws securing the left and right air inlet duct couplings and remove them from the air box.

**Figure F****Refer to Figure F for Step 10**

Step 10: Locate the temperature sensor harness on the passenger side of the factory air box and disconnect the harness, by sliding back the red locking tab and then pressing down on the back tab.

**Figure G****Refer to Figure G for Steps 11-12**

Step 11: Remove the (2) 10mm screws securing the factory air box to the transmission.

Step 12: Unclip the harnesses on both side of the air box.



Refer to Figure H for Steps 13-14

Step 13: From the engine side, remove the 10mm screw securing the factory air box on the driver side.

Step 14: Unclip the harness from the side of the air box.

**Figure I****Refer to Figure I for Steps 15-16**

Step 15: Remove the 10mm screw securing the air box on the passenger side.

Step 16: Unclip the harness from the side of the air box.

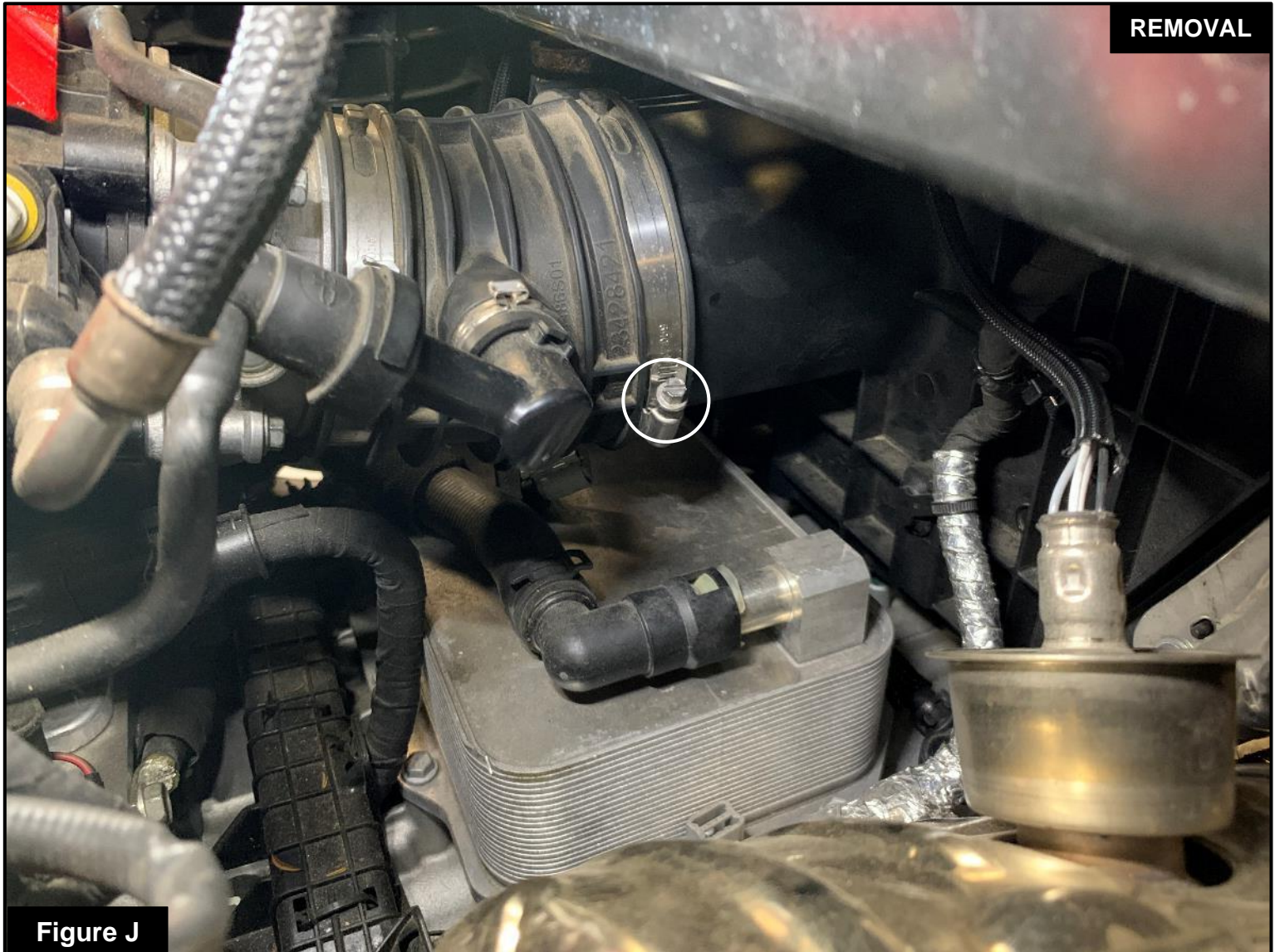


Figure J

Refer to Figure J for Step 17

Step 17: Using a 7mm nut driver or flathead screwdriver, loosen the clamp securing the coupling to the factory air box. Do not loosen the clamp securing the coupling to the throttle body yet.



Figure K

Refer to Figure K for Step 18

Step 18: Pull the factory air box out of the coupling and move it towards the rear of the vehicle. Be careful not to damage any of the remaining wires connected to the airbox. It only needs to come back 1-2 inches to allow removal of the throttle body coupling.

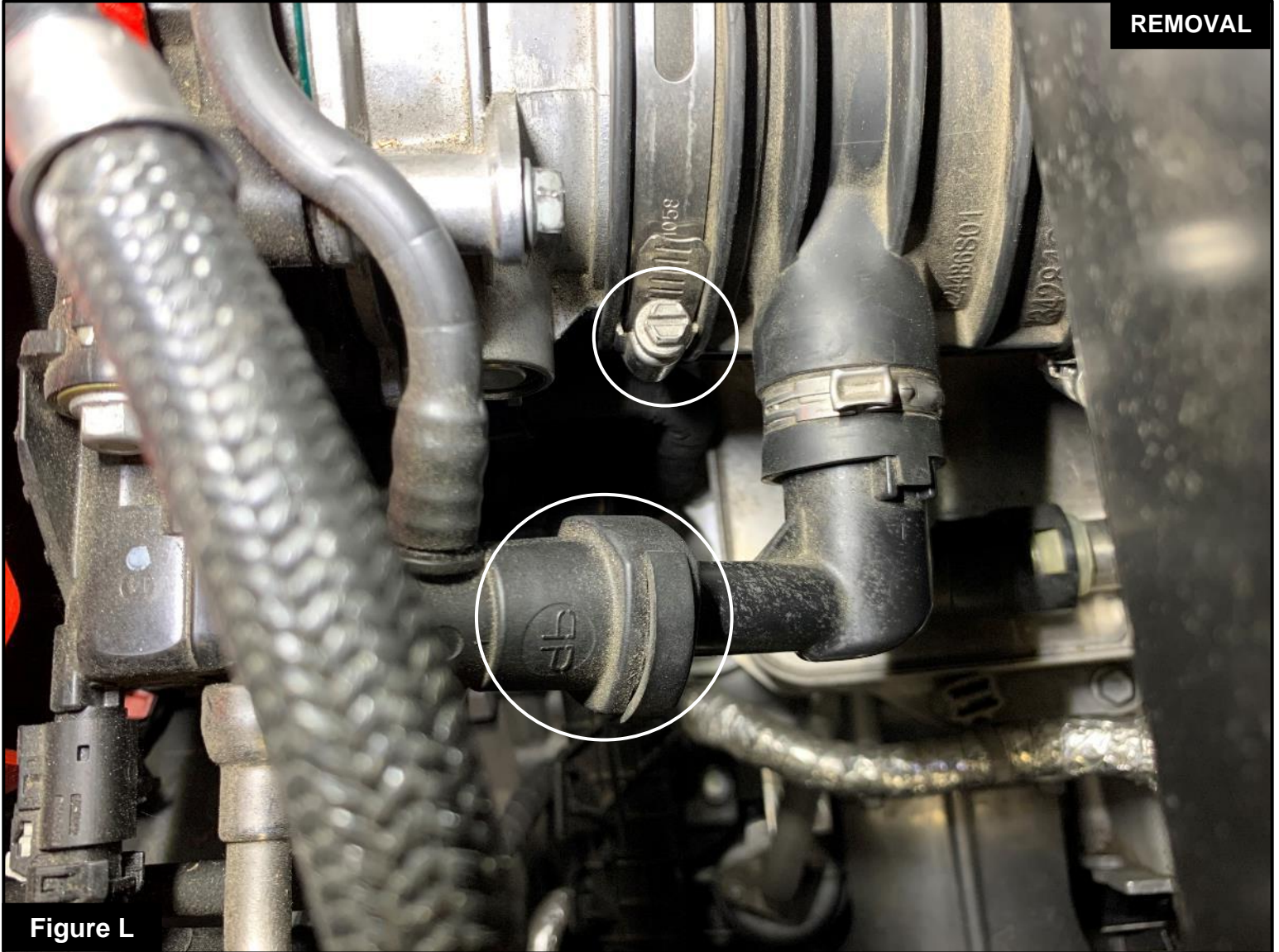


Figure L

Refer to Figure L for Steps 19-20

Step 19: Disconnect the quick disconnect fitting from the throttle body coupling, by pushing down on the black tab and pulling them apart.

Step 20: Using a 7mm nut driver or flathead screwdriver, loosen the clamp securing the coupling to the throttle body. Then remove the coupling from the vehicle.

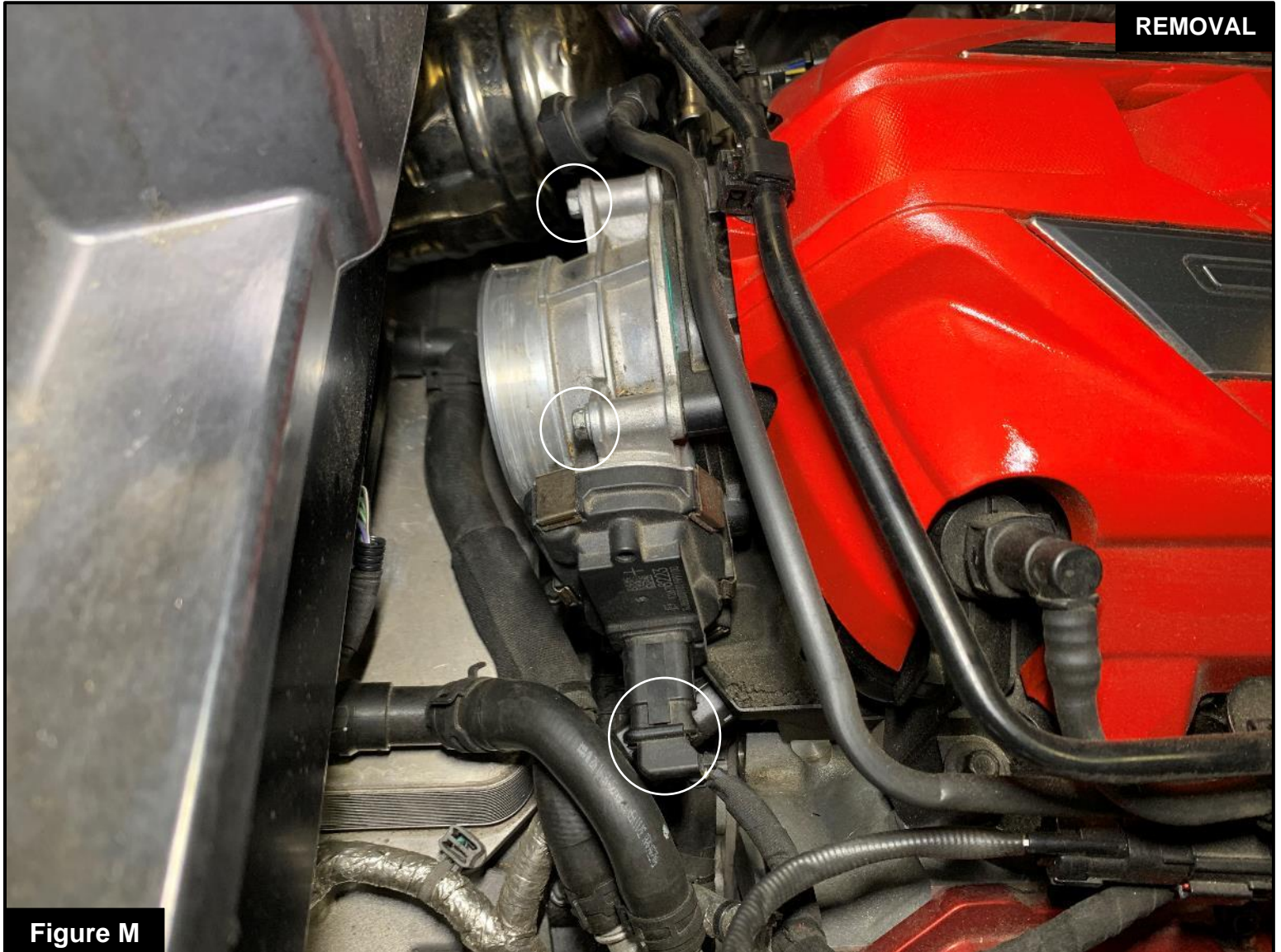


Figure M

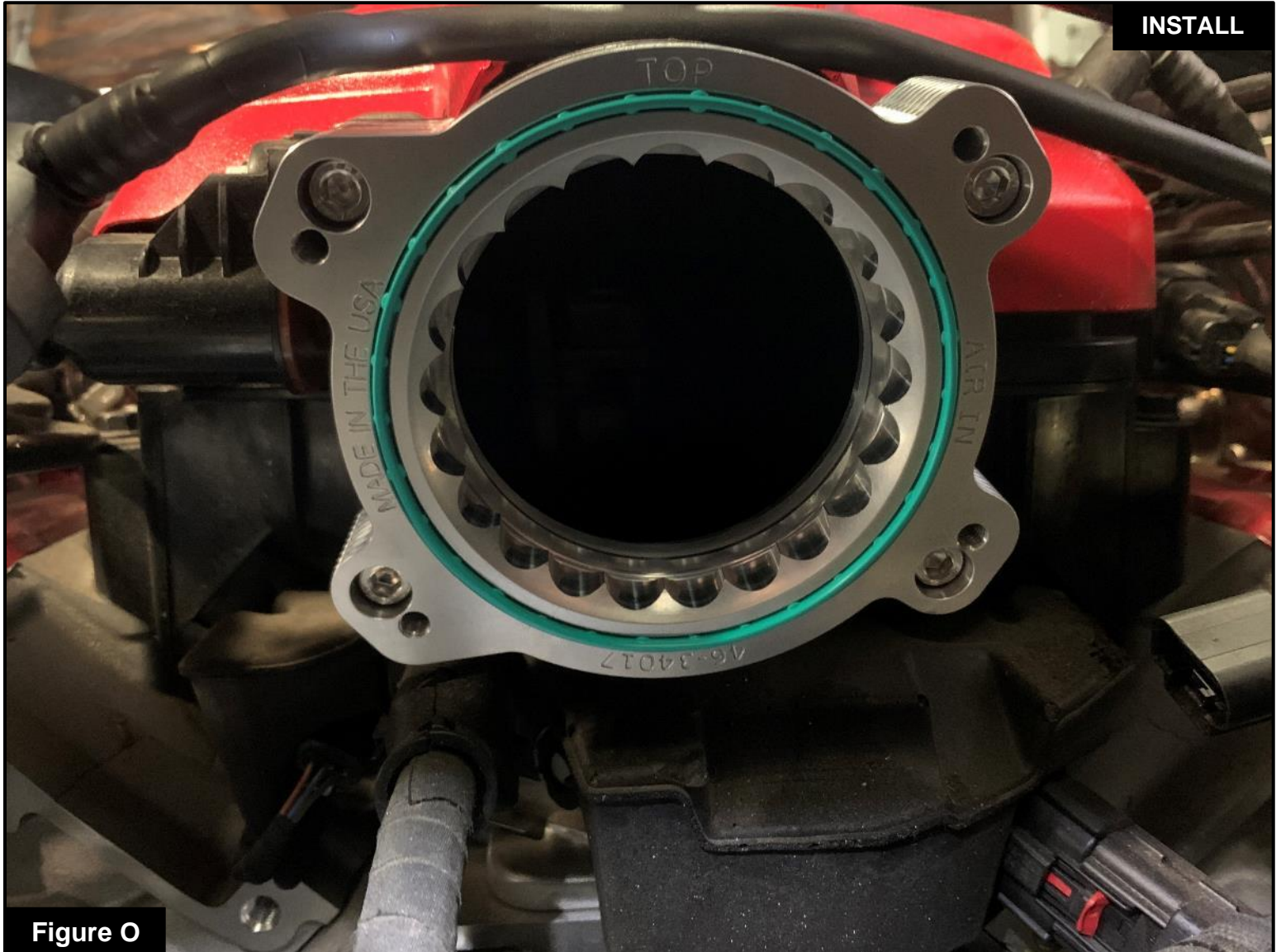
Refer to Figure M for Steps 21-22

Step 21: Disconnect the harness from the throttle body, by squeezing the locking tab on the bottom side of the connector and pulling it out.

Step 22: Remove the (4) 10mm screws securing the throttle body to the intake manifold, and then remove the throttle body from the vehicle. These factory screws will be reused.

**Figure N****Refer to Figure N for Step 23**

Step 23: Install the provided O-ring onto the throttle body spacer groove. Make sure it is fully seated.

**Figure O****Refer to Figure O for Step 24**

Step 24: Install the throttle body spacer onto the intake manifold using the provided bolts. The face with no engraving will go against the intake manifold and the “Top” engraving will be facing up. Make sure the factory O-ring stayed into the groove on the intake manifold. Tighten with a 5mm hex key.



Figure P

Refer to Figure P for Steps 25 -26

Step 25: Using the factory screws, reinstall the throttle body to the aFe POWER throttle body spacer. The throttle body will be slightly clocked.

Step 26: Reconnect the harness to the throttle body. Make sure the connector is fully pushed in.



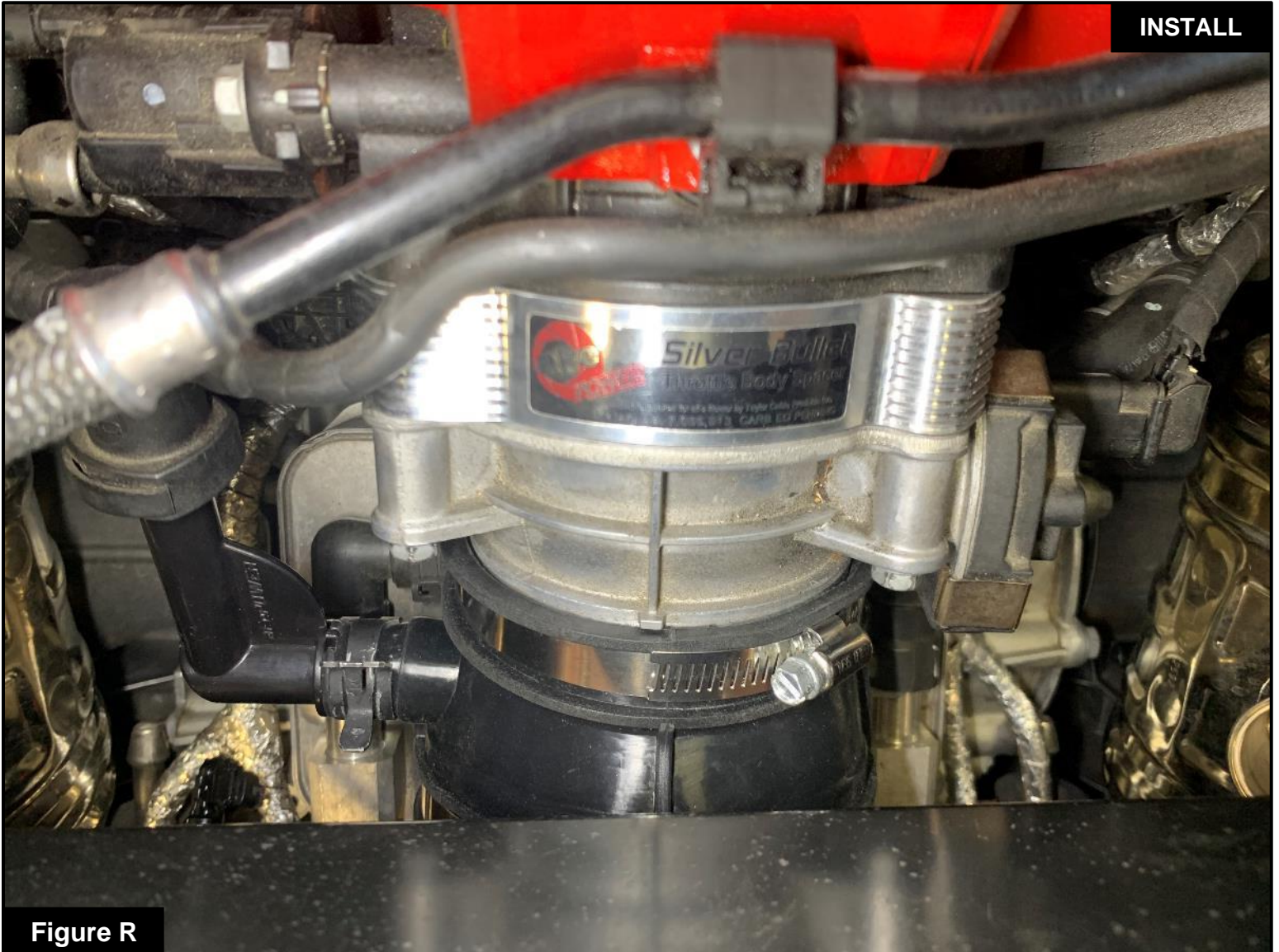
Figure Q

Refer to Figure Q for Steps 27-28

Step 27: Install the plastic fitting into the aFe POWER coupling and secure it with the provided spring clamp.

Make sure the small tab on the fitting is aligned with the notch in the coupling.

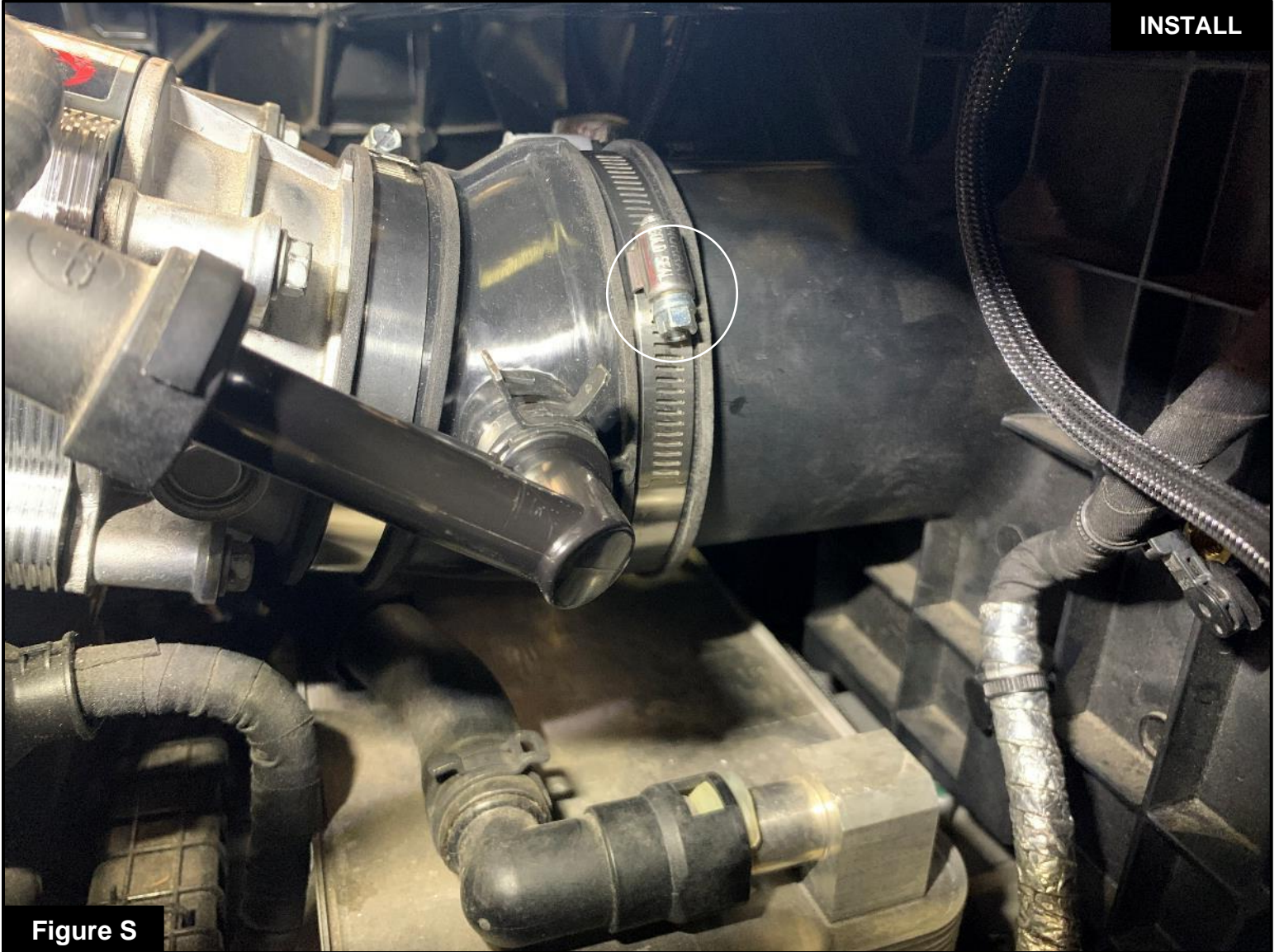
Step 28: Loosely place the clamps onto the coupling.

**Figure R****Refer to Figure R for Steps 30-32**

Step 30: Install the coupling onto the throttle body. The rib on top of the coupling should be pointing up.

Step 31: Reconnect the quick disconnect fitting to the aFe POWER fitting.

Step 32: Tighten the clamp securing the coupling to the throttle body with a 8mm nut driver or flathead screwdriver.

**Figure S****Refer to Figure S for Step 33**

Step 33: Push the factory air box into the aFe POWER coupling. Make sure the air box is back into its original position then tighten the clamp between the coupling and the air box.

**Figure T****Refer to Figure T for Steps 35-37**

Step 35: Reinstall the (4) 10mm screws securing the front and rear of the airbox, and reattach the harness clips that were removed. Two of the screws will be reinstalled from the top of the engine and the two other ones from the trunk opening.

Step 36: Reinstall both air duct couplings and secure them with the factory screws.

Step 37: Reconnect the temperature sensor harness



Figure U

Refer to Figure U for Steps 38-40

Step 38: Reinstall the plastic engine cover with the screws removed at step 5.

Step 39: Reinstall the carpet and roof latches. Secure them with the screws, hooks and clips removed at steps 2, 3 and 4.

Step 40: Reinstall the seal trim surrounding the trunk, removed at step 1.

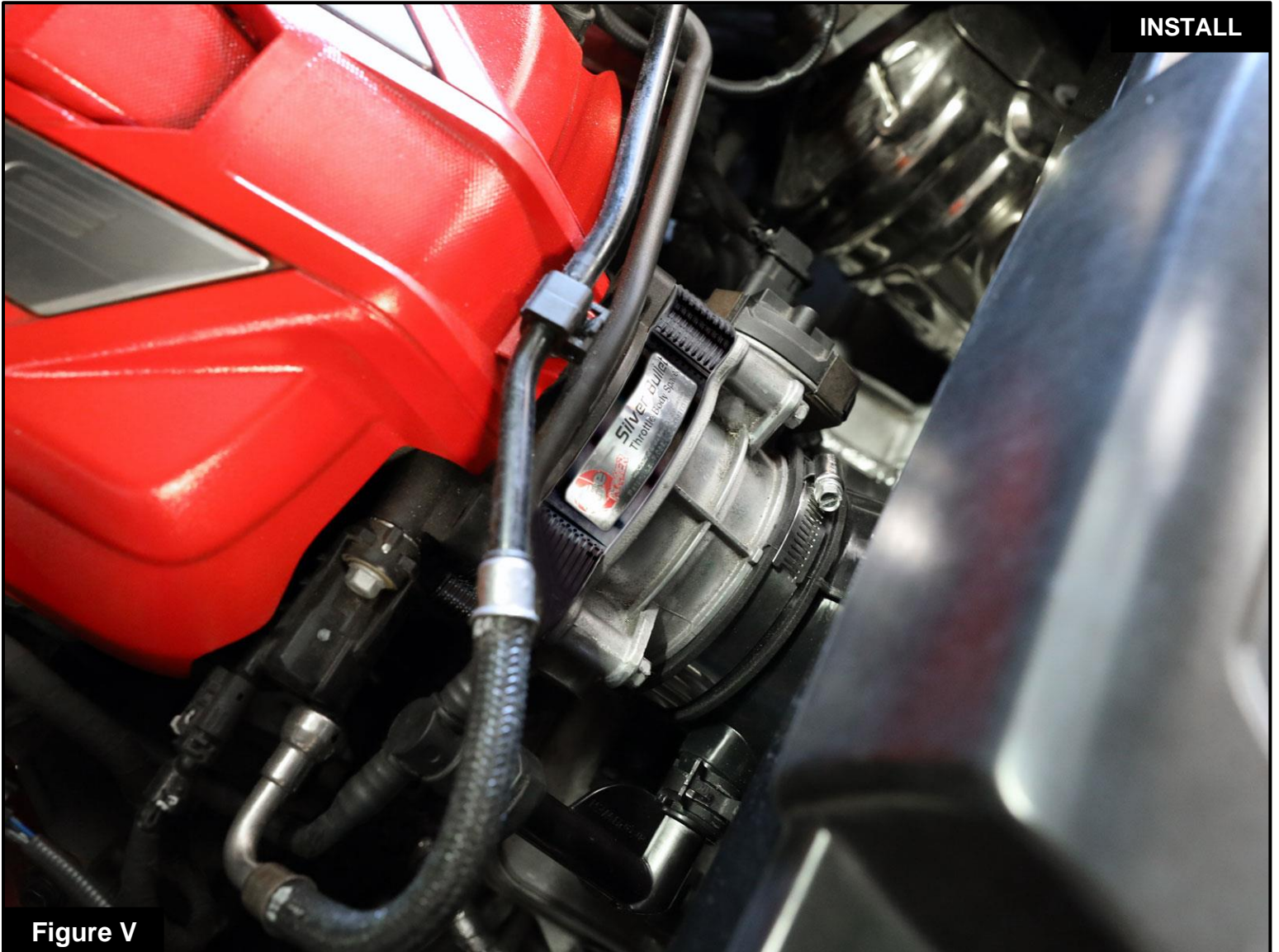


Figure V

Refer to Figure V for Step 42

Step 42: Your installation is now complete. Verify all connection and screws are secured. Thank you for choosing aFe POWER!



Pro DRY S Air Filter



P/N: 11-1048

Pro 5R Air Filter



P/N: 10-10148

Sprint Booster V3



P/N: 77-14007

Power Cleaner for PRO 5R



P/N: 90-10201

Pro Dry S Restore Kit



P/N: 90-59999

Pro 5R Restore Kit



P/N: 90-50501

Pro GUARD 7 Restore Kit



P/N: 90-50500

Power Cleaner for Pro Dry S



P/N: 90-10601

To purchase any of the items above, view airflow charts, dyno graphs, photos, and video; please go to aFepower.com.



Warranty

General Terms:

- aFe warrants their products to be free from manufacturer's defects due to workmanship and material.
- This warranty applies only to the original purchaser of the product and is non-transferrable.
- Proof of purchase of the aFe product is required for all warranty claims.
- Warranty is valid provided aFe instructions for installation and/or cleaning were properly followed.
- Proper maintenance with regular inspections of product is required to insure warranty coverage.
- Damage due to improper installation, abuse, unauthorized repair or alteration is not warranted.
- Incidental or consequential damages or cost, including installation and removal of part, incurred due to failure of aFe product is not covered under this warranty.
- All warranty is limited to the repair and/or replacement of the aFe part. To request Return Goods Authorization ("RGA"), email RGA@afepower.com or call (951)493-7100. Upon receipt of the RGA, you must return the product to the address provided in the RGA, freight prepaid and accompanied with a dated proof of purchase and the RGA. Upon receipt of the defective product and upon verification of proof of purchase, aFe will either repair or replace the defective product within a reasonable time, not to exceed thirty days.

Product Category	P/N Prefix	Warranty duration
Direct OE Replacement Filters	10, 11, 30, 31, 71, 73	Life of the vehicle
Racing Filters	18	1 year
Universal	20, 21, 23, 24, 72, TF	2 years
Air Intake Systems	50, 51, 53, 54, 55, 56, 57, 58, 75, TR, TA, TL, TM	2 years
Exhaust Systems	49	2 years
Intercoolers & Intercooler Tubes	46-2	2 years
Intake Manifolds	46-1	2 years
Differential Cover	46-7	Life of the vehicle
Exhaust Manifolds	46	2 years
Throttle Body Spacers	46-3	2 years
Turbochargers	46-6	2 years*
Fluid Filters	44	90 days
Pre-Filters	28	2 years
Heavy Duty OE Replacement	70	2 years
Powersports OE Replacement	81, 87	2 years
Powersports Intake Systems	85	2 years

No other warranty expressed or implied applies nor is any person or advanced FLOW engineering authorized to assume any other warranty. Some States do not allow the exclusion or limitation of incidental or consequential damages or do not allow limitations on how long an implied warranty lasts, so the above limitations or exclusions may not apply to you. This warranty gives you specific legal rights, and you may also have other rights which vary from State to State.

*See turbocharger warranty for more info



advanced FLOW engineering, Inc.

252 Granite Street Corona, CA 92879
TEL: 951.493.7100 • TECH: 951.493.7185
E-Mail: Tech@aFepower.com