

## ***advanced FLOW engineering***

Silver Bullet Throttle Body Spacer

### **Instruction Manual** P/N: 46-32011

Make: RAM	Model: 1500 TRX	Year: 2021-2022	Engine: V8-6.2L (s/c)
Make: DODGE	Model: Charger SRT Hellcat	Year: 2015-2021	Engine: V8-6.2L (s/c)
Make: DODGE	Model: Challenger SRT Hellcat	Year: 2015-2021	Engine: V8-6.2L (s/c)
Make: DODGE	Model: Durango SRT Hellcat	Year: 2021-2021	Engine: V8-6.2L (s/c)
Make: JEEP	Model: Grand Cherokee Trackhawk	Year: 2018-2021	Engine: V8-6.2L (s/c)



- Please read the entire instruction manual before proceeding.
- Ensure all components listed are present.
- For technical support please call 951-493-7185.
- Ensure you have all necessary tools before proceeding.
- Do not attempt to work on your vehicle when the engine is hot.
- Retain factory parts for future use.

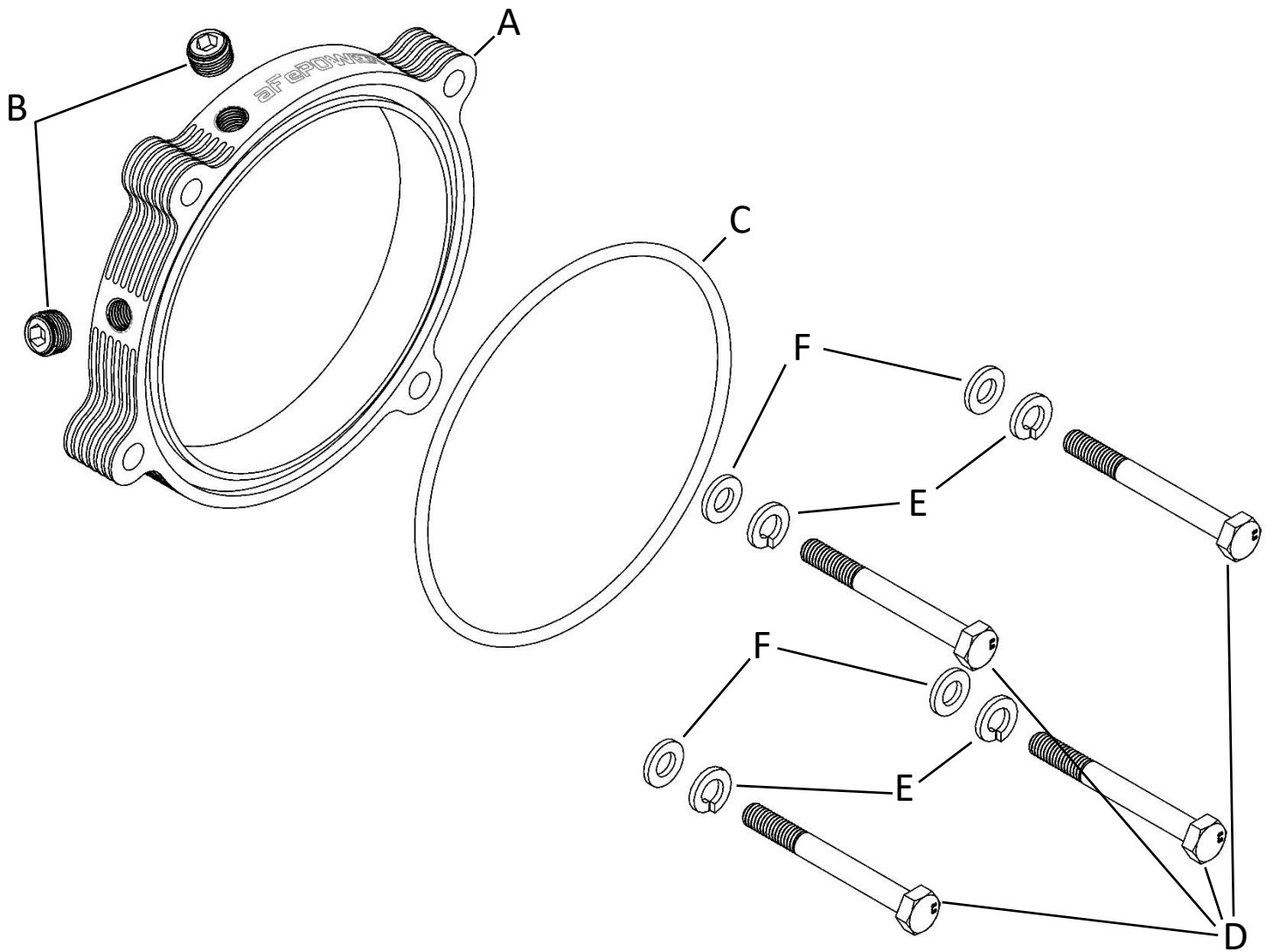
Label	Qty.	Description	Part Number
A	1	Silver Bullet Throttle Body Spacer	R46-32011
B	2	1/8" NPT Plug	03-50029
C	1	O-Ring (-241)	03-50765
D	4	M6x1x55mm Screws	03-50673
E	4	M6 Lock Washer	03-50071
F	4	M6 Flat Washer	03-50177

**Installation will require the following tools:**

Torx T30 driver, Trim removal tool, 3/16" Allen key, 8mm, 10mm, & 13mm sockets and driver.

Warranty Information available at <https://afepower.com/contact#warranty>

**Emissions Disclaimer:** This product is not currently CARB exempt and is not available for purchase in California or for use on any vehicle registered with the California Department of Motor Vehicles.





**Refer to Figure A for Step 1**

Step 1: Remove the factory air intake cover ①.

**Figure B****Refer to Figure B for Step 2**

Step 2: Using a small trim removal tool, remove the sixteen (16) clips ② securing the factory front cowl, then remove the cowl.

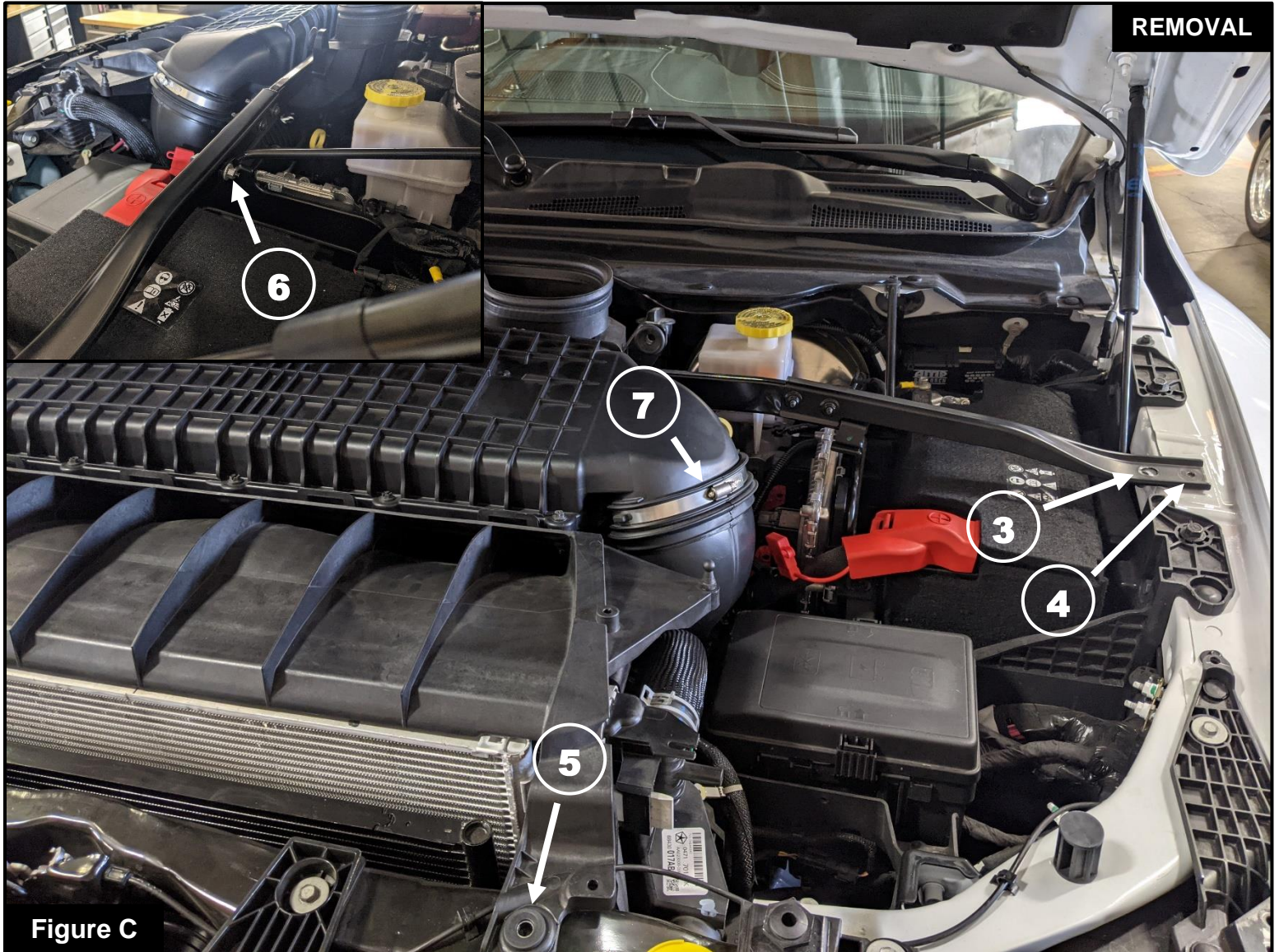


Figure C

**Refer to Figure C for Steps 3-5**

Step 3: On the driver side of the vehicle, use a 13mm socket and ratchet to remove the larger screw (3) securing the factory intake brace.

Step 4: Using a 10mm socket and driver, remove the smaller screw securing the factory intake brace (4), as well as the screw (5) securing the factory intake to the core support in the front of the vehicle. Remove the single nut (6) on the back side of the intake brace using a 10mm socket and driver.

Step 5: Using an 8mm socket and driver, loosen the clamp (7) at the factory air intake tube.

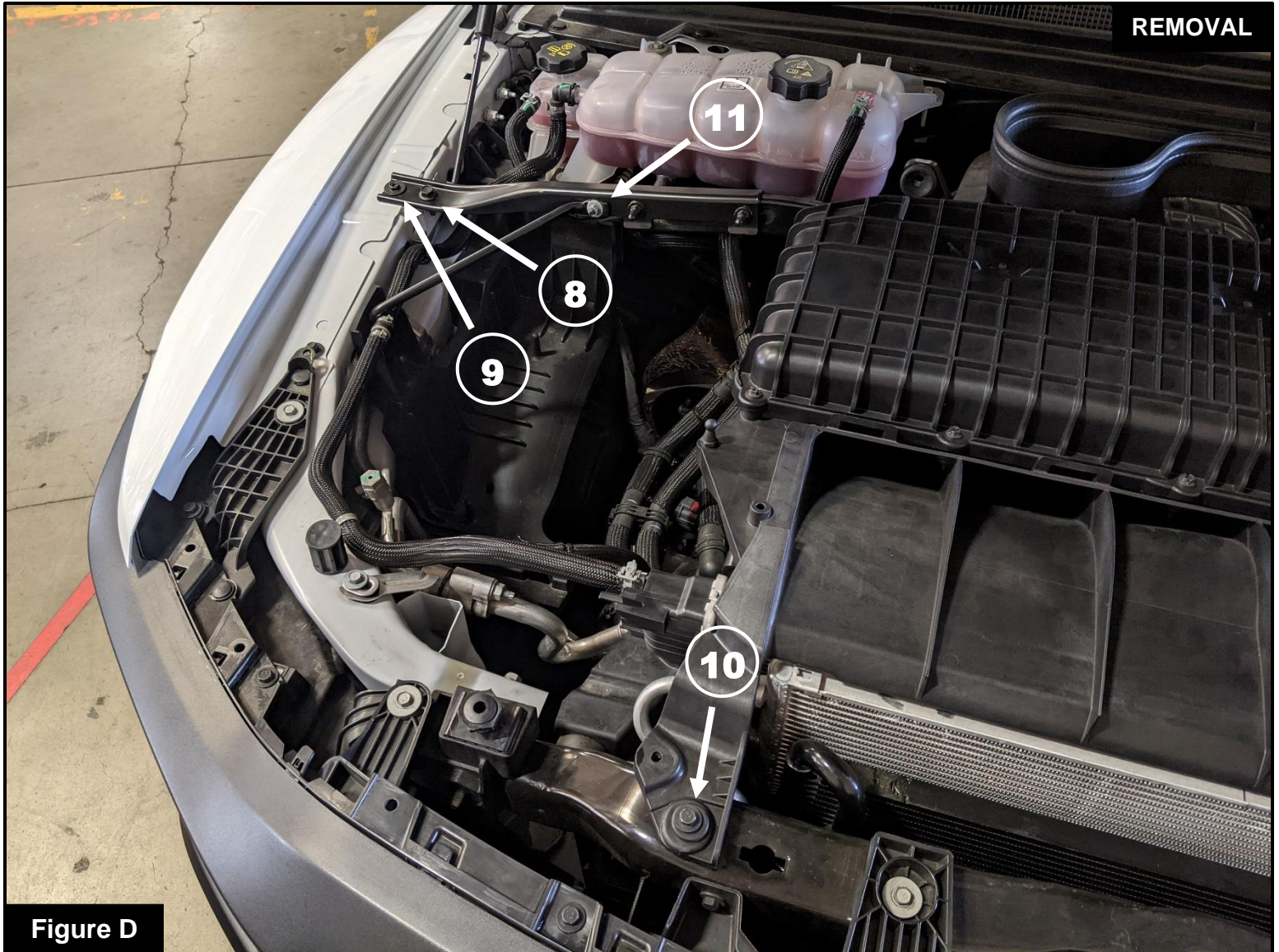


Figure D

**Refer to Figure D for Steps 6-8**

- Step 6: On the passenger side of the vehicle, use a 13mm socket and driver to remove the larger screw (8) securing the factory intake brace.
- Step 7: Using a 10mm socket and driver, remove the smaller screw securing the factory intake brace (9), as well as the screw (10) securing the factory intake to the core support in the front of the vehicle. Remove the single nut (11) on the front side of the intake brace using a 10mm socket and driver.
- Step 8: Carefully lift the factory air intake out of the vehicle leaving the intake tube in the vehicle.

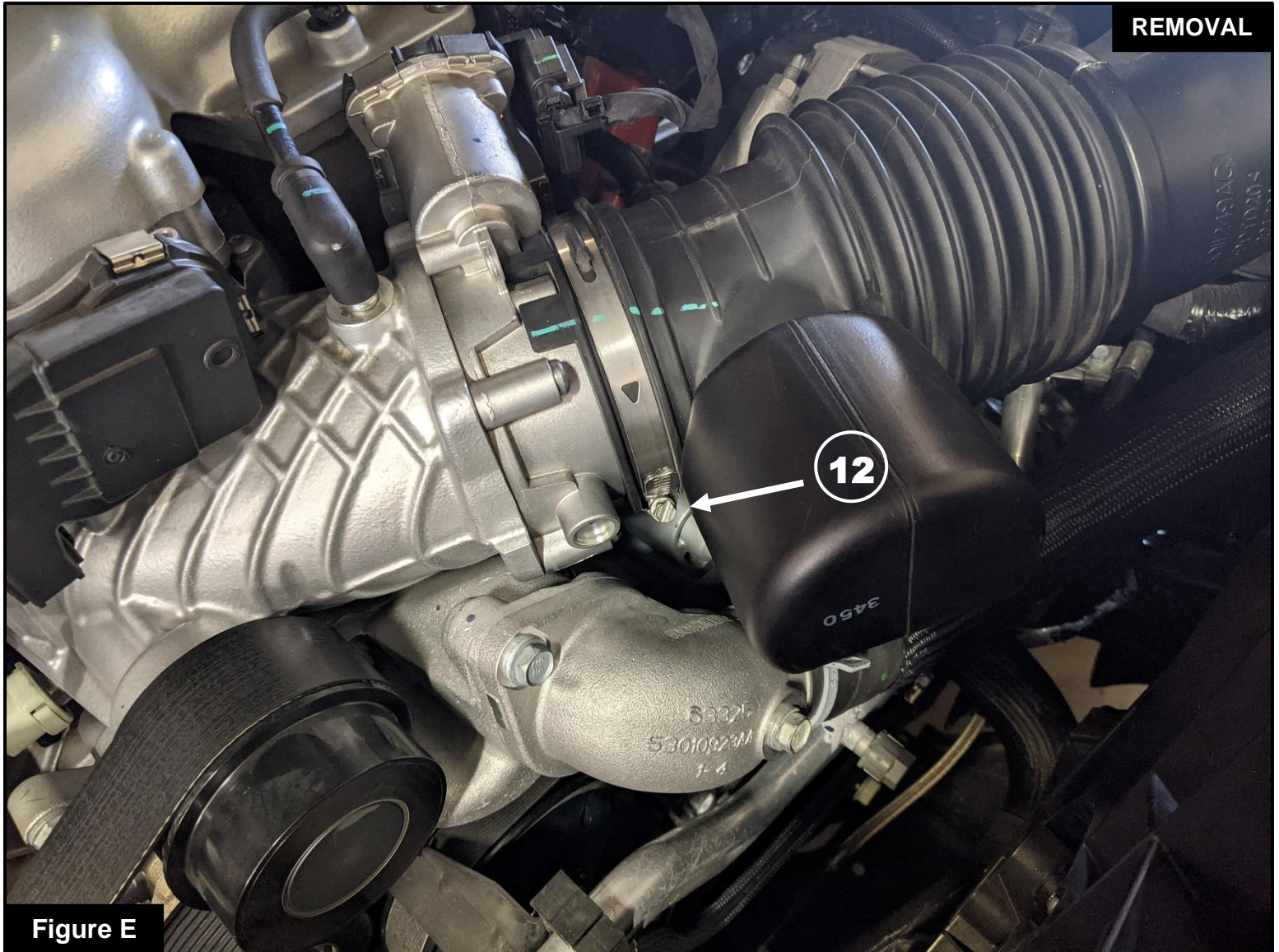
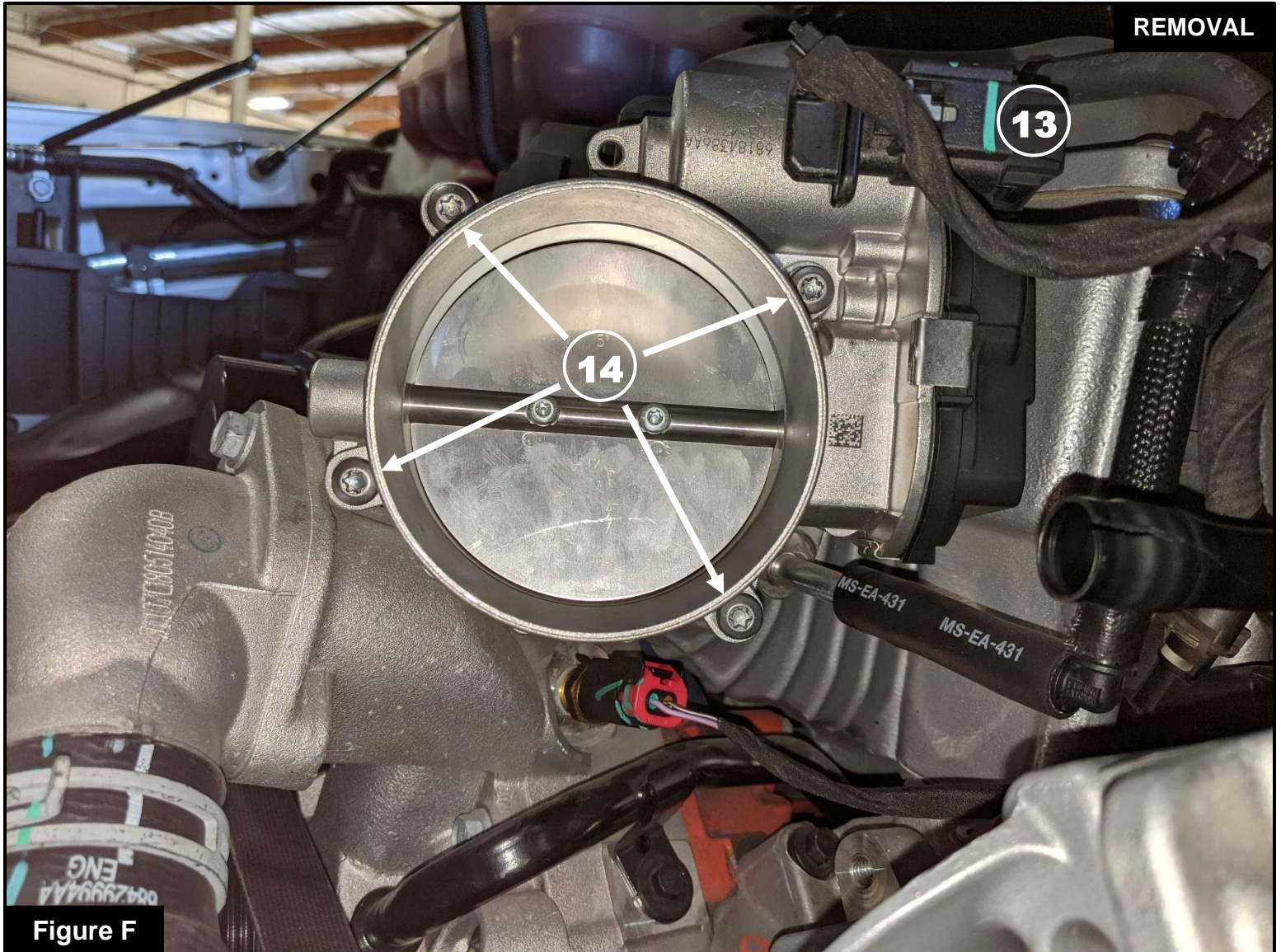


Figure E

### **Refer to Figure E for Step 9**

Step 9: Using an 8mm socket and driver, loosen the clamp ⑫ securing the factory air intake tube to the throttle body, then pull the tube away from the throttle body, being careful not to kink the hard plastic vent line on the back side.

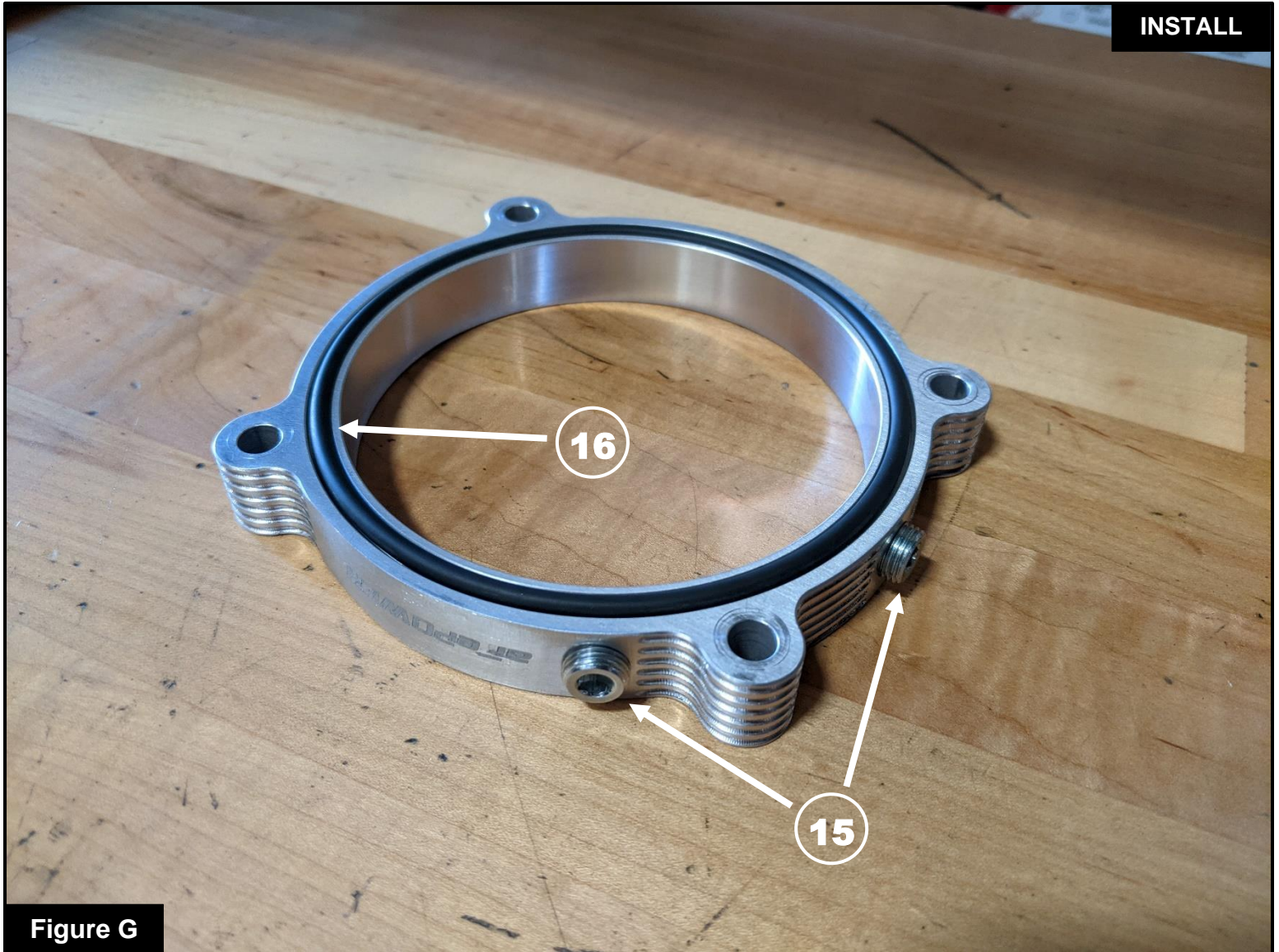


**Refer to Figure F for Steps 10-11**

**\*The following steps are shown with the air intake tube removed from the vehicle for visibility\***

Step 10: Disconnect the throttle body wire harness (13).

Step 11: Using a T30 Torx driver, remove the four (4) screws (14) securing the throttle body to the supercharger inlet.

**Figure G****Refer to Figure G for Steps 12-13**

Step 12: If not being used, install the supplied 1/8" NPT plugs (15) into the tapped holes on your aFe Silver Bullet Throttle Body Spacer. Tighten securely using a 3/16" Allen key.

Step 13: Install the supplied O-ring (16) into the groove on your aFe Silver Bullet Throttle Body Spacer.

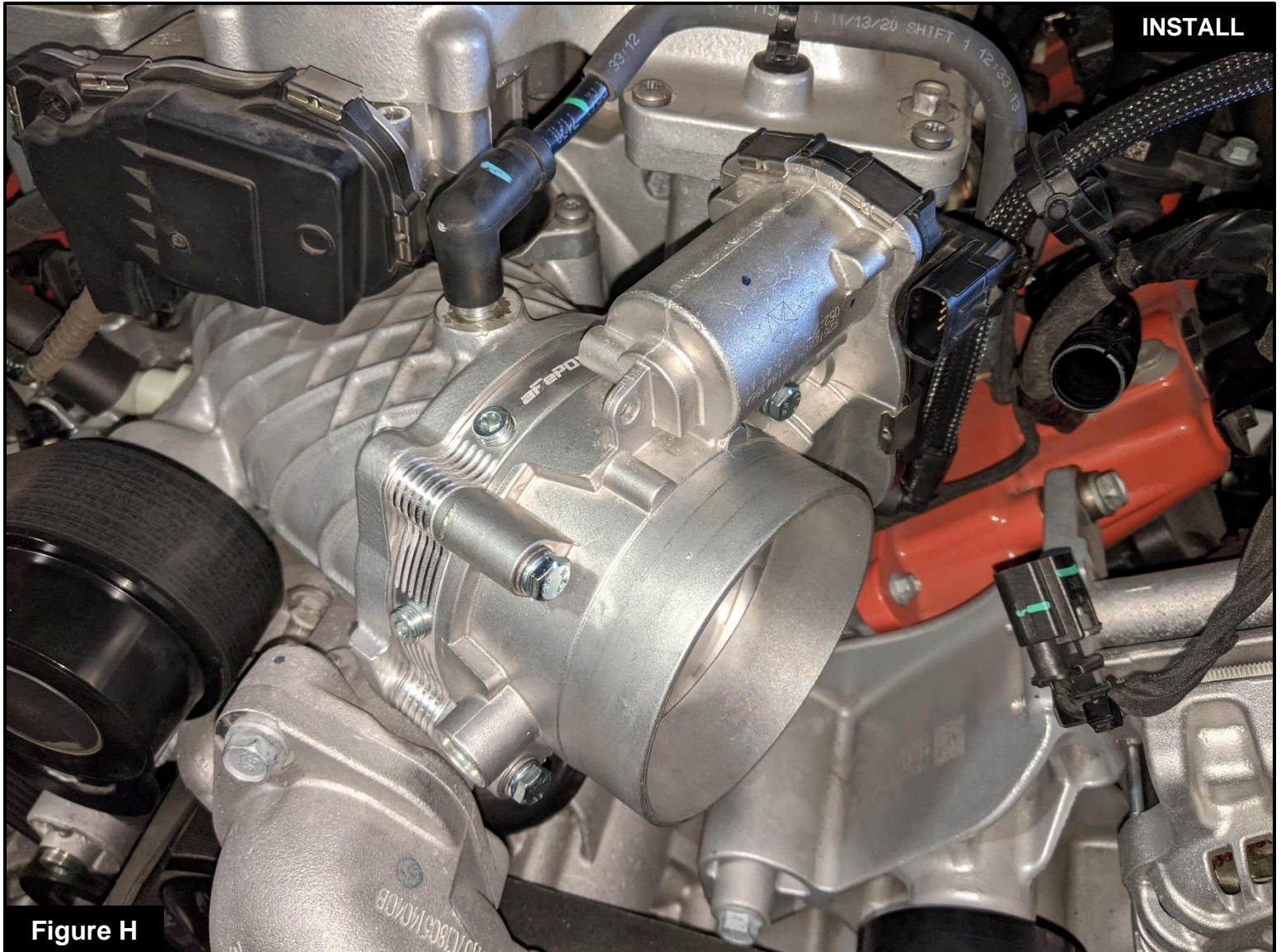


Figure H

### **Refer to Figure H for Steps 14-15**

Step 14: Install your aFe Silver Bullet Throttle Body Spacer between the supercharger inlet and the throttle body with the O-ring facing the throttle body. Secure using the provided M6 screws. Slide the lock washer onto the screw first, then the flat washer so the flat washer is against the throttle body. Tighten using a 10mm socket and driver to 71 in-lbs (8 Nm).

Step 15: Reconnect the throttle body wire harness.



**Refer to Figure I for Step 16**

Step 16: Following steps 1-9 in reverse order, reinstall your factory air intake system, front cowl, and air intake cover. Confirm that all connections are secure and clamps tightened. Your installation is now complete. Thank you for choosing aFe POWER!

**NOTE: Check all clamps, and connectors are secure after 100-200 miles**



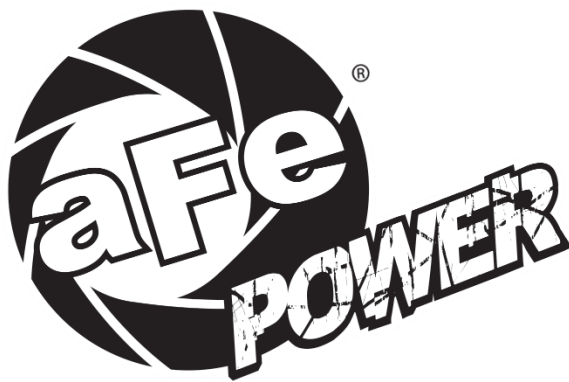
**PAGE LEFT BLANK INTENTIONALLY**



**PAGE LEFT BLANK INTENTIONALLY**



**PAGE LEFT BLANK INTENTIONALLY**



***advanced FLOW engineering, inc.***

252 Granite Street, Corona, CA 92879  
TEL: 951.493.7100 • TECH: 951.493.7185  
E-Mail: [Tech@aFepower.com](mailto:Tech@aFepower.com)